



孕龍科技股份有限公司
ZEROPLUS TECHNOLOGY CO., LTD.

23585新北市中和區建八路123號2樓
2F., No.123, Jian 8th Rd., Zhonghe Dist.,
New Taipei City 23585, Taiwan
Tel: +886-2-6620-2225 Fax: +886-2-2223-4362
Service Mail: service@zeroplus.com.tw

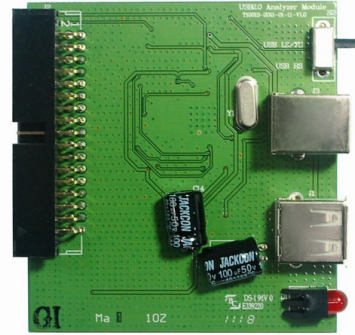
上海市浦东新区张江晨晖路825弄8号101室
电话: +86-21-50155235-6 传真: +86-21-50155235 #607
深圳市宝安82区新湖路华美居商务中心A区C座605室
电话: +86-755-29556305-6 传真: +86-755-29556306 #613

www.zeroplus.com.tw

201311

Copyright © ZEROPLUS TECHNOLOGY CO., LTD. All Rights Reserved.

USB 2.0 Capture Board



Accessory

- USB2.0 Capture Board * 1
- Connecting Pannel * 1
- USB Cable * 1
- User Manual * 1

"USB2.0 decoder" software download linkage:

http://www.zeroplus.com.tw/logic-analyzer_en/products.php?pdn=7&product_id=382

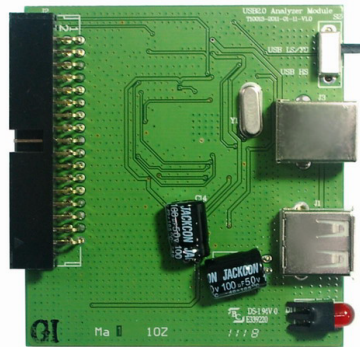
or go to ZEROPLUS website:

http://www.zeroplus.com.tw/logic-analyzer_en/

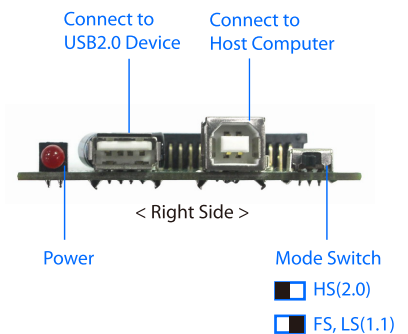
Click button -> Products / Protocol Analyzers / PC System / USB 2.0

Appearance

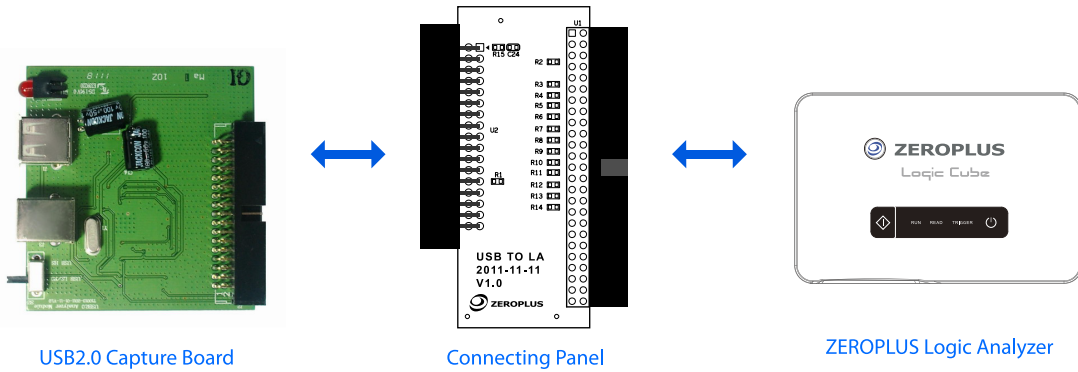
72 x 69.6 x 13.4 mm, 25g



< Left Side >



< Right Side >



USB2.0 Capture Board

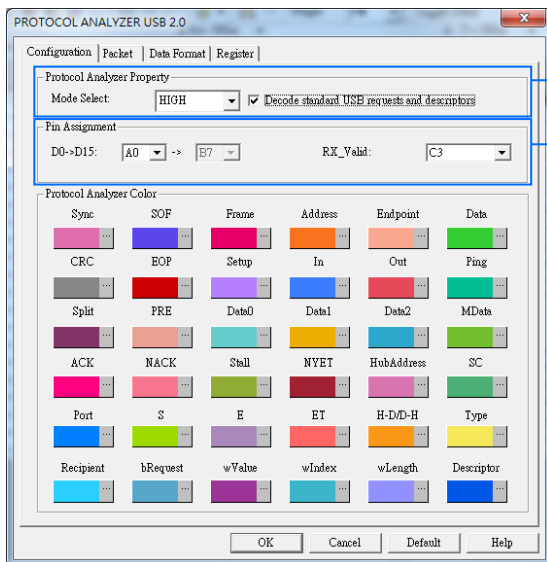
Connecting Panel

ZEROPLUS Logic Analyzer

USB 2.0 Module Setting Window

Step 1. Channel Setting : Selected channel strips change to Bus (group into bus), and then proceed to Bus property setting Bus Protocol configuration.

Step 2. Protocol Configuration Setting

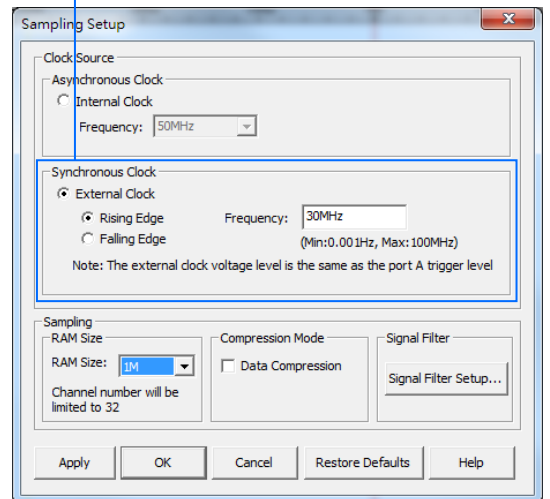


Mode selection : High speed

Channel setting :
Click a Rx_Valid in the drop down, and select the channel "C3"

Step 3. Sample Rate Setting

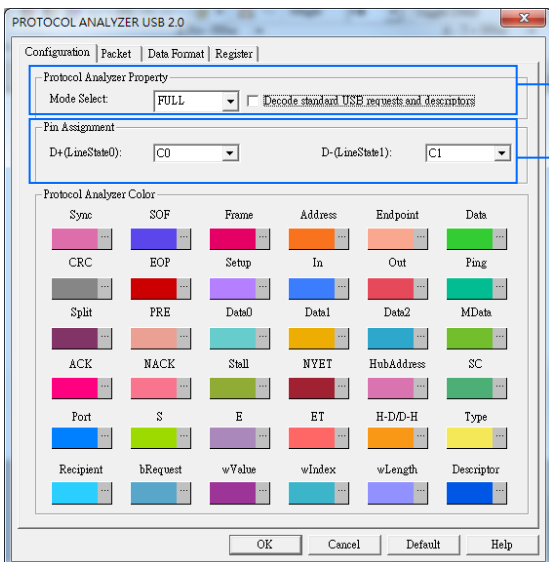
Set the sample rate at 30 M Hz of the external clock.
Setting complete of the USB 2.0 Protocol



USB 1.1 Module Setting Window

Step 1. Channel Setting : selected channel strips change to Bus (group into bus), and then proceed to Bus property setting Bus Protocol configuration.

Step 2. Protocol Configuration Setting



Mode Selection : Full Speed

Channel Setting:
Click a D+(Line State0) in the drop down, and select the channel "C0".
Click a D-(Line State1) in the drop down, and select the channel "C1".

Step 3. Sample Rate Setting

Set the sample rate at 50 MHz of the internal clock.
Setting complete of the USB1.1 Protocol

