

## 數位信號量測與分析 套件組 Digital Signal Measure and Analysis Set

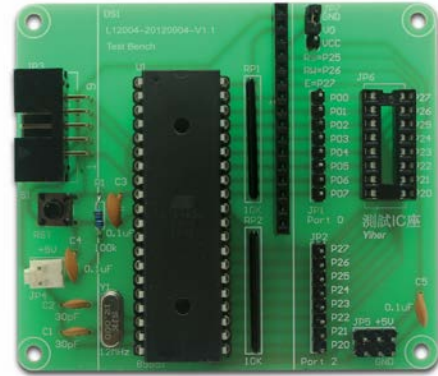


孕龍科技股份有限公司  
ZEROPLUS TECHNOLOGY CO., LTD.

23585新北市中和區建八路123號2樓  
2F., No.123, Jian 8th Rd., Zhonghe Dist.,  
New Taipei City 23585, Taiwan  
Tel: +886-2-6620-2225 Fax: +886-2-2223-4362  
Service Mail: service@zeroplus.com.tw

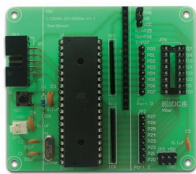
上海市浦东新区张江晨晖路825弄8号101室  
电话: +86-21-50155235~6 传真: +86-21-50155235 #607  
深圳市宝安82区新湖路华美居商务中心A区C座605室  
电话: +86-755-29556305~6 传真: +86-755-29556306 #613

[www.zeroplus.com.tw](http://www.zeroplus.com.tw)  
20130102  
Copyright © ZEROPLUS TECHNOLOGY CO., LTD. All Rights Reserved.



### Brief Introduction

#### 16 Pin 多功能測試電路板 16 Pin Multi Function Test Bench



以AT89S51為主的測試電路板，可直接以ISP方式進行軟體燒錄，操作方便。測試電路板上備有LCD埠可測試LCD模組，16 Pin多功能測試埠可測試基本數位IC及各式EEPROM、Flash，輕鬆進行數位信號測試追蹤。

Based on AT89S51, the test circuit board can directly program the firmware in the mode of ISP, so the operation is convenient. The LCD port on the test circuit board can test the LCD module; the 16 Pin multifunctional test port can test the basic digital IC and all kinds of EEPROMs and Flashes, easy to test and track the digital signal.

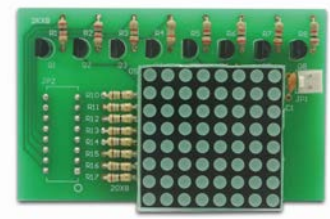
### Specification

- Power : DC 5V
- Size : 78mm x 68mm x 12mm
- Weight : 5g
- MCU : AT89S51

### Accessories



LCD1602 Module



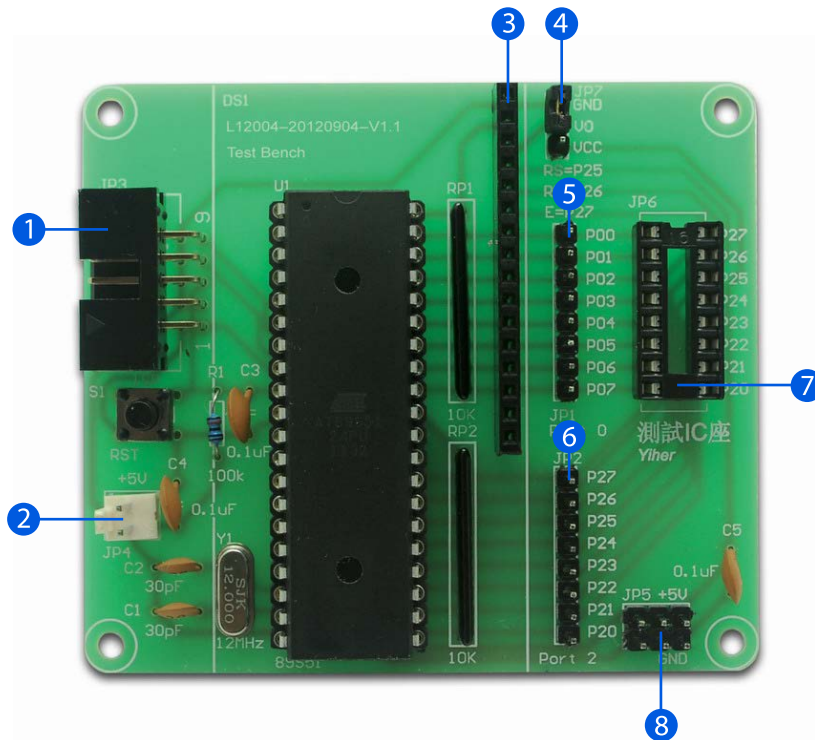
8 x 8 LED 陣列板  
8 x 8 LED Array Board



七節顯示器模組板  
7-Segment Display Module Board



AT25F12



NO.	Function Name	Description
1	ISP 埠 ISP Port	搭配 AT89S51 下載線可進行 MCU 程式燒錄 Do MCU programming with an AT89S51 download line.
2	電源輸入埠 Power Input Port	使用 DC 5V 進行電源供應 Take DC 5V as power supply.
3	LCD 模組連接埠 LCD Module Connection Port	可連接 LCD1602 (或相同腳位) 顯示模組 Can connect with the LCD1602 (or the same pin) display module.
4	LCD 模組對比控制 LCD Module Contrast Control	用於控制 LCD 模組顯示對比亮度 Used to control the contrast luminance of LCD module.
5	AT89S51 Port 0	連接至 AT89S51 Port 0 Connect with the AT89S51 Port 0.
6	AT89S51 Port 2	連接至 AT89S51 Port 2 Connect with the AT89S51 Port 2.
7	16 Pin IC 測試座 16 Pin IC Test Socket	多功能元件測試座，可連接各式 16 Pin (或以下) IC 進行測試。如：8 x 8 LED 陣列板、七節顯示器模組板、AT93C66、AT25F512 或其他相關周邊元件等。 The multifunctional component test socket can connect with all kinds of 16 Pin (or below) ICs to do test, such as 8 x 8 LED array board, 7-segment display module board, AT93C66, AT25F512 or other related peripheral components.
8	電源輸出/接地 Power Output / Ground	DC 5V 電源輸出 Output the power of DC 5V.